

DR. FRITSCH

SONDERMASCHINEN

Dressing and Sharpening Machine

CGM 200



Dr. Fritsch Sondermaschinen GmbH, 70736 Fellbach, Germany

TECHNICAL SPECIFICATION

CGM 200

ESSENTIAL CHARACTERISTICS

- For blade diameter from 230 to 1.600 mm
- Completely closed version
- Manual working
- Grinding is oscillation-free thanks to a solid frame of the machine and all components.
- Long lifetime of guidings and drives due to a new guiding system
- Large windows
- Highest working security (the machine corresponds to the EEC machine standards and is certified correspondingly)

OPTION

- Belt filter

CONSTRUCTION AND FUNCTION

- Solid welded frame
- Closed casing with sliding door and window
- A grinding system for lateral and relief grinding
- A grinding system for peripheral grinding
- Blade drive with clamping flanges
- Infinitely variable saw blade drive
- Closed water cooling system
- Manual blade feeding
- Manual approach to grinding position

The dressing and sharpening machine CGM 200 is a totally encased grinding machine made exclusively for dressing, sharpening and relieve grinding of discs. The machine is suitable for wet grinding as well as the dry grinding.

The machine is laid out for

- grinding the periphery of the disc turning in opposite direction or in same direction;
- grinding the sides of the disc turning in opposite direction or in same direction.

The operations are executed by oscillating grinding wheels.

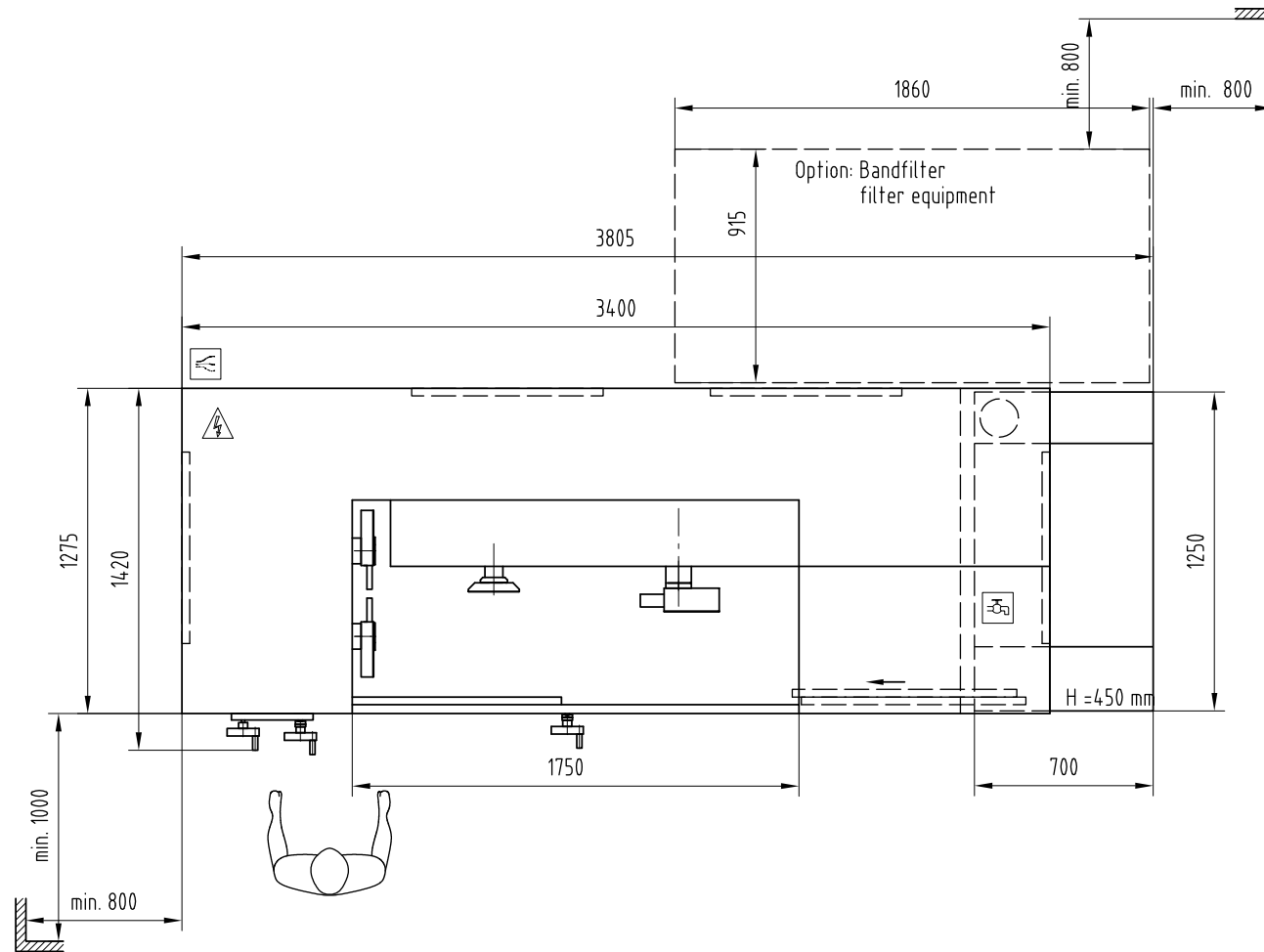
In addition to that it is possible to clean the brazing zone (= relieve grinding). This operation is without oscillation of the grinding wheels.

All operations are done manually by the operator.

TECHNICAL DATA

Total connected load:	12 kVA
Supply voltage:	3 x 400 V, 50/60 Hz Layout for other voltages and frequencies available upon request
Nominal current:	3 x 23 A
Fuses (to be provided by the customer)	3 x 35 A
Cooling water:	
- Volume of tank: sedimentation tank:	160 l
- capacity of pump:	approx. 100 l/min.
- cooling agent:	water with anti-rust emulsion
Compressed air:	
- consumption:	approx. 25 l/min.
- pressure:	6 bar
Saw blades:	
- diameter range:	230 – 1600 mm
- drive:	20 – 300 min ⁻¹ , infinitely variable
- clamping/releasing:	mechanical
Grinding wheels:	
- lateral grinding wheels:	Ø 300 mm, thickness 20 mm, bore Ø 60 mm
- peripheral grinding wheels:	Ø 300 mm, thickness 50 mm, bore Ø 60 mm
Dimensions:	
- Machine part:	length: approx. 3.500 mm width: approx. 1.460 mm height: approx. 2.120 mm
- sedimentation tank:	length: approx. 700 mm width: approx. 1.250 mm height: approx. 450 mm
- belt filter (option):	length: approx. 1.860 mm width: approx. 780 mm height: approx. 700 mm
Total weight:	approx. 2.600 kg

- Technical data and design are subject to modifications -



max. Maschinenhöhe: 2150 mm
(max machine height)

erforderliche Raumhöhe: 2350 mm
(required height)

Symbol	Bedeutung (meaning)	Symbol	Bedeutung (meaning)	30 cm ---	0:\ZA3\ Z13337	AUFSTELLPLAN layout plan
	Elektrik (electricity)		Gas (gas)		Bearb. Datum Name 28.11.2002 FEIL	
	Pneumatik (pneumatic)		Wand (wall)	Gepr.	machine type :	
	Kuehlwasser (cooling water)		Arbeiter (operator)	Norm	Zeichnungs Nr.: 6P APL 001 01	
	Absaugung (suction)				DR. FRITSCH <i>Sondermaschinen GmbH</i> 70722 Fellbach	