

DR. FRITSCH

SONDERMASCHINEN

Granulating Machine

GA 270



Dr. Fritsch Sondermaschinen GmbH, 70736 Fellbach, Germany

Technical Specification

GA 270

for granulating metal powders with / without diamond and ceramic bonds

- ▶ high productivity
- ▶ simple to handle and easy to learn
- ▶ requires electricity and exhaust connection only
- ▶ little space requirement
- ▶ low maintenance
- ▶ easy to clean

- **Machine frame**

welded construction with incorporated SPS control system

- **Passing unit**

with continuously adjustable passing wing and stainless steel sieve for the production of the pellets; capacity \approx 1.5 l

- **Granulating unit**

for the compression/compaction and rounding of the pellets with continuously adjustable speed

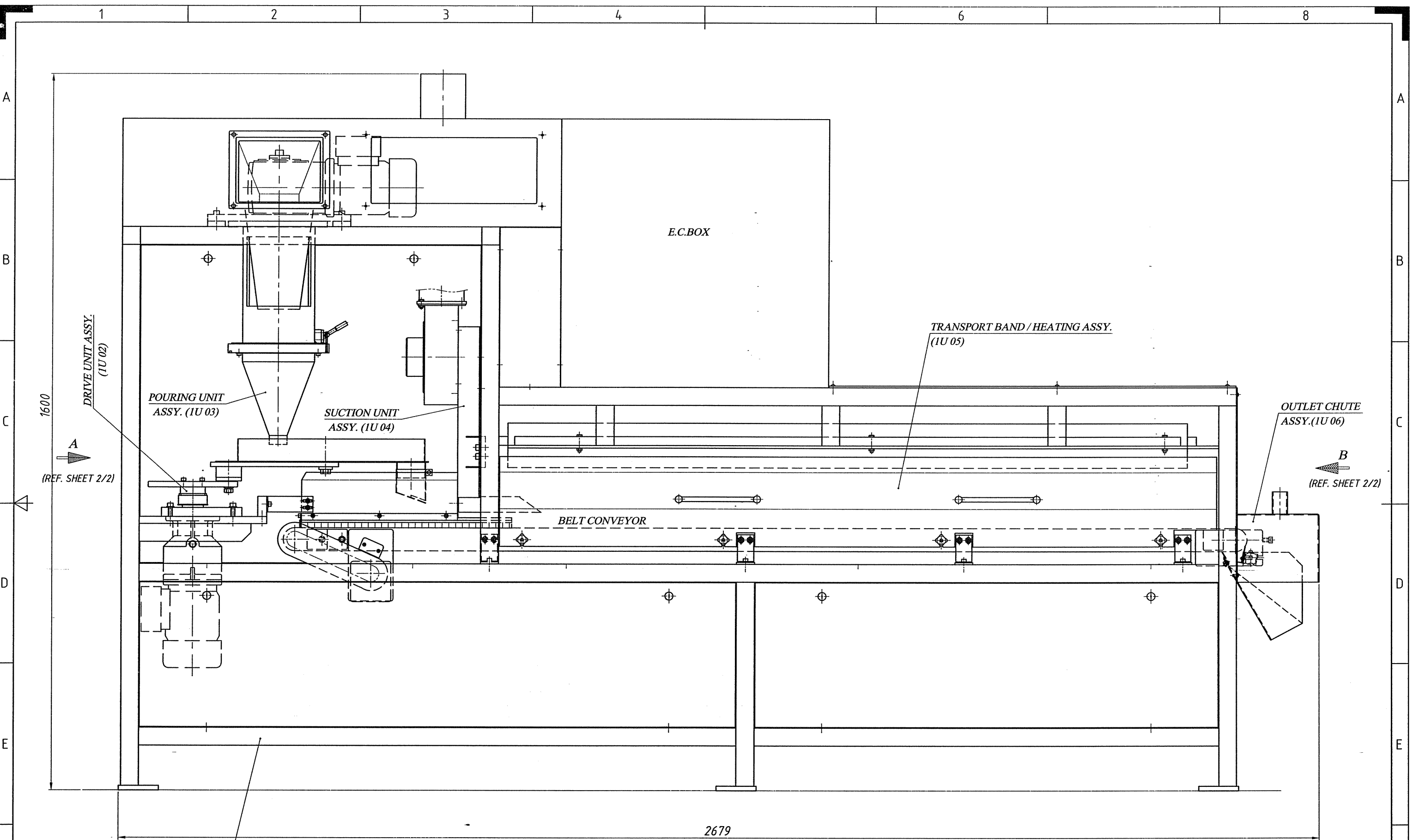
- **Drying unit**

with continuously adjustable conveyor belt, temperature controlled infrared radiator and vapour extraction system

TECHNICAL DATA

Connected load:	9 kVA
Supply voltage:	400 V, 50/60 cps, 3 phases other voltages are possible upon request
Total nominal current:	3 x 14 A
Fuse protection (provided by customer):	3 x 16 A
Suction system:	provided by customer
- Connection	connecting piece \varnothing 100 mm
Mesh size:	0,6 – 1,2 mm
Throughput:	2 – 10 kg/h
Dimensions of the machine:	L x W x H: approx. 2680 x 710 x 1600 mm
Weight:	approx. 800 kg
Space required:	L x W x H: approx. 3880 x 2510 x 1800 mm

- Subject to modifications of technical data and design -

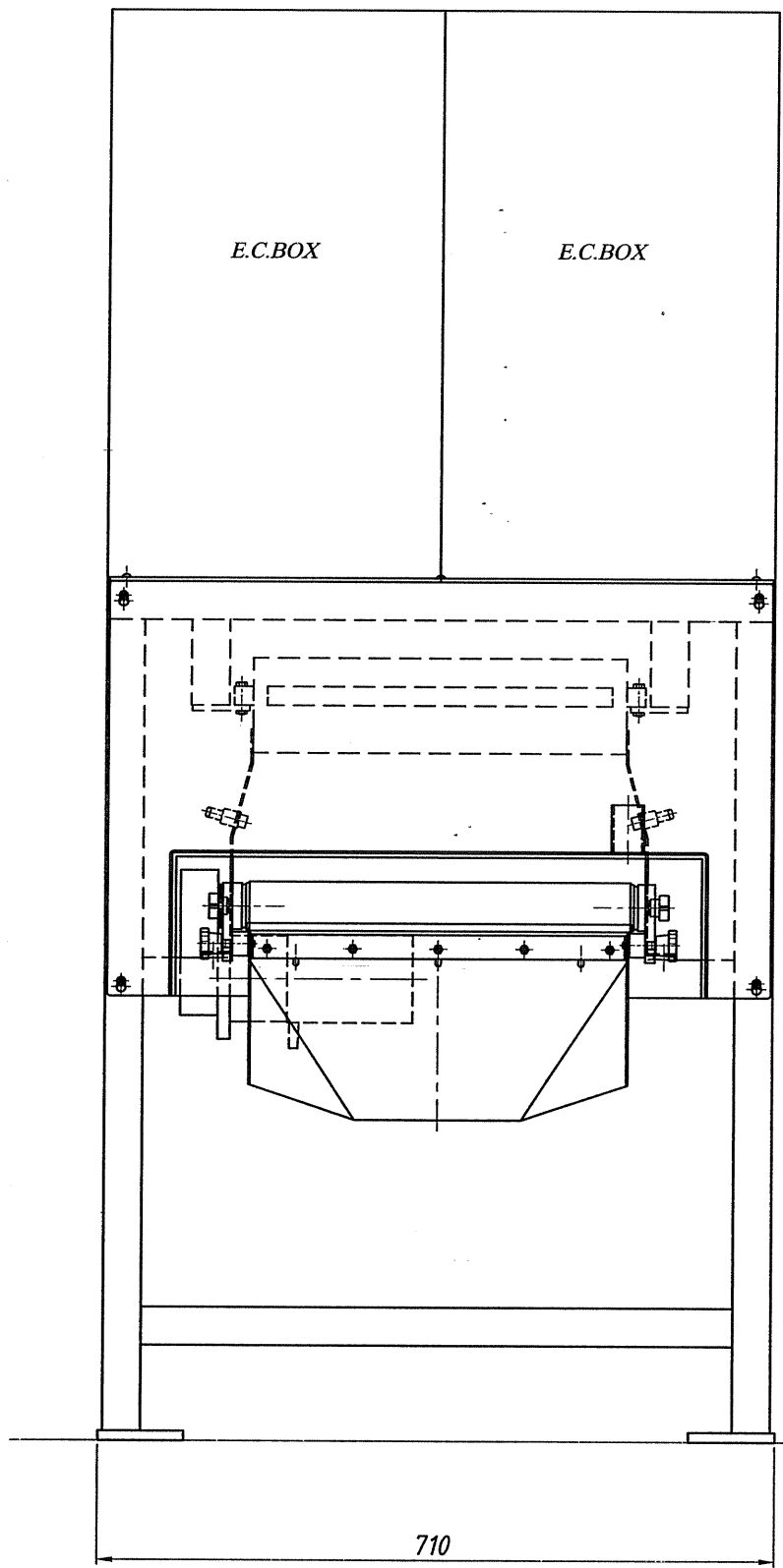


MACHINE FRONT VIEW
(TOP COVER REMOVED)

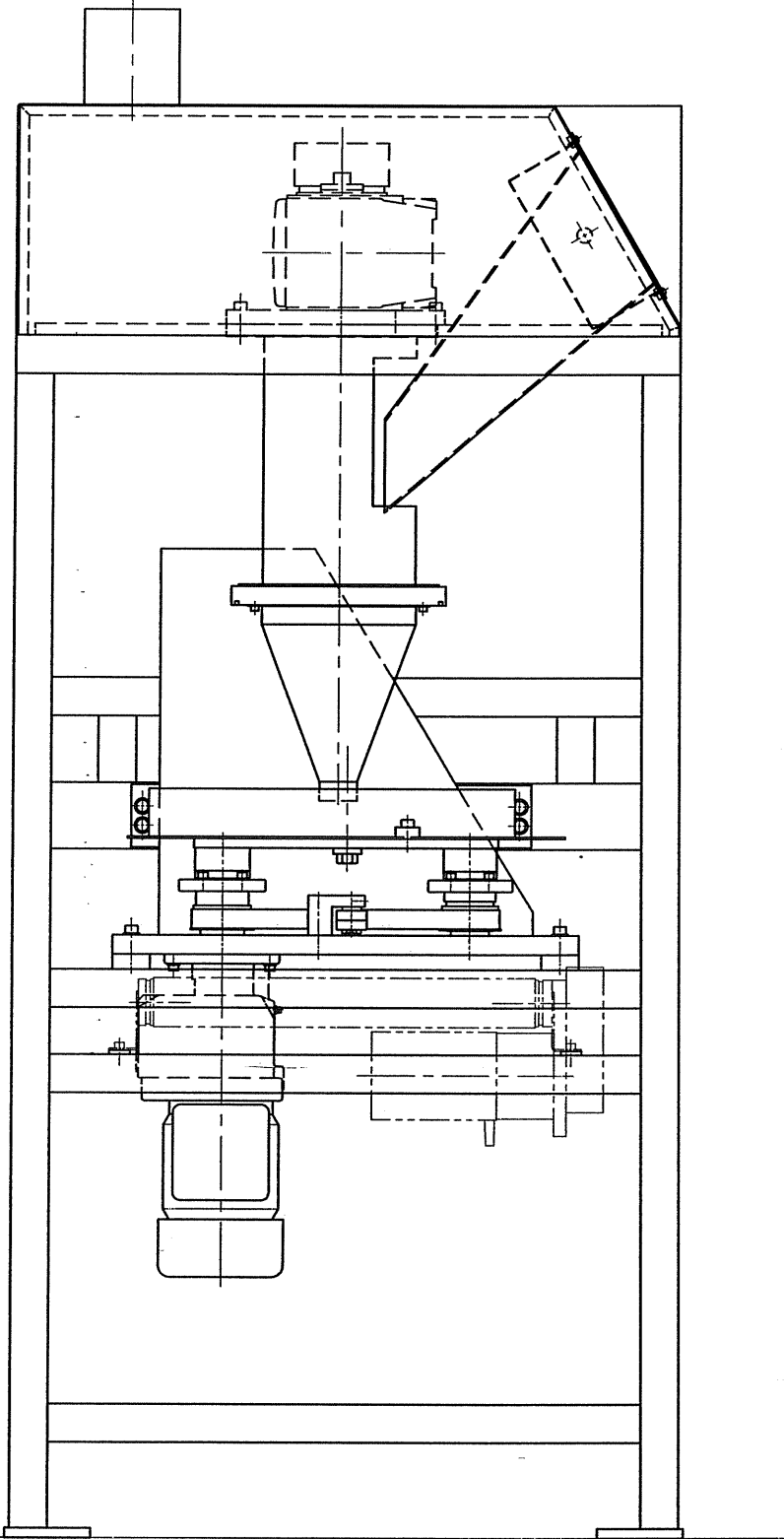
Unspecified machining Deviations		
Above	Upto	Deviation
0.5	6	±0.1
6	30	±0.2
30	120	±0.3
120	315	±0.5
315	1000	±0.8
1000	2000	±1.2

DESIGNATION	GA270	SCALE	DRN.	31-07-09	JCB	PROJECTION
GRANULATING MACHINE ASSY.		1:7.5	CHD.	01-08-09	S.M.	
DRAWING NO.			1U 00 000 1/2			
NO. OF SHEETS			2	SHEET NO. 1		

DR. FRITSCH



VIEW - 'B'
(FROM SHEET 1/2)



VIEW - 'A'
(FROM SHEET 1/2)
(COVERS REMOVED)

Unspecified machining Deviations		
Above	Upto	Deviation
0.5	6	±0.1
6	30	±0.2
30	120	±0.3
120	315	±0.5
315	1000	±0.8
1000	2000	±1.2

DESIGNATION GA270
GRANULATING MACHINE ASSY.

SCALE 1:7.5
DRN. 31-07-09 JCB
CHD. 01-08-09 S.M. PROJECTION

DR. FRITSCH

DRAWING NO. 1U 00 000 2/2
NO. OF SHEETS 2 SHEET NO. 2